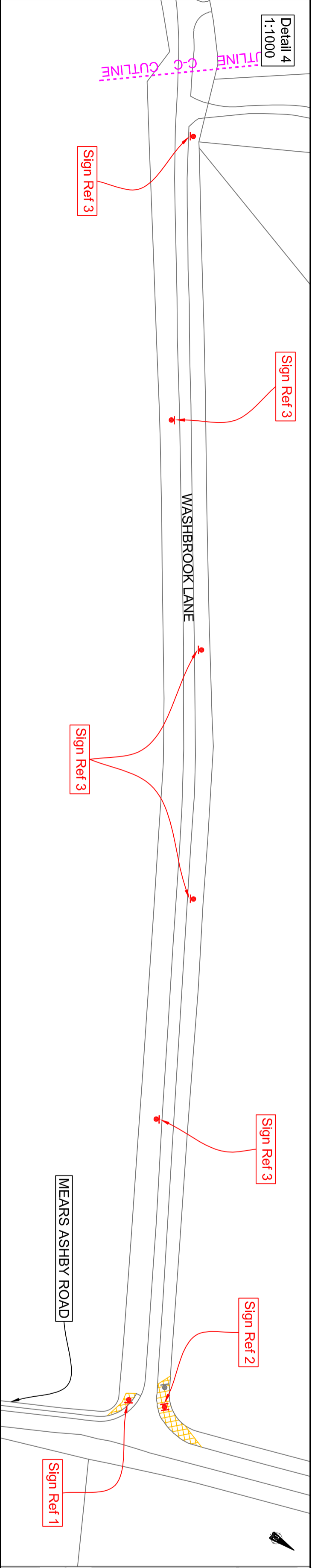
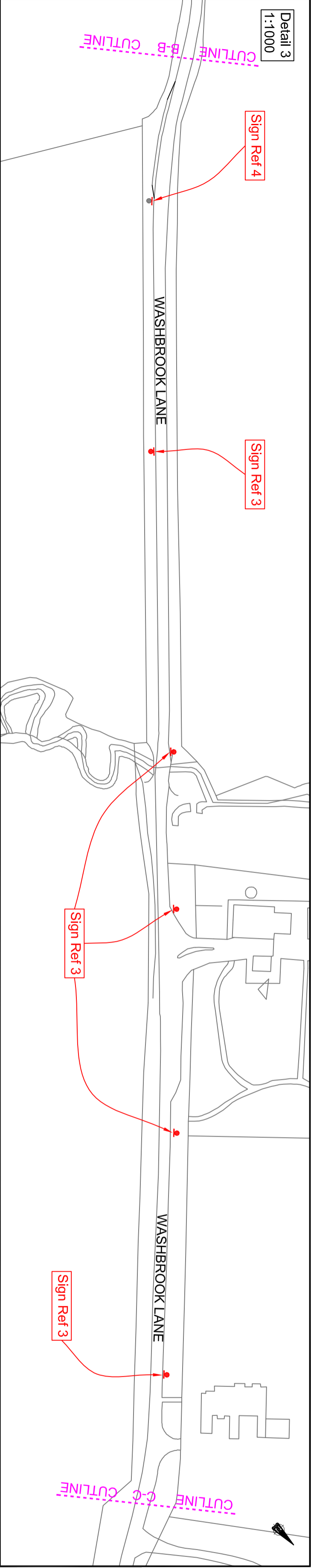
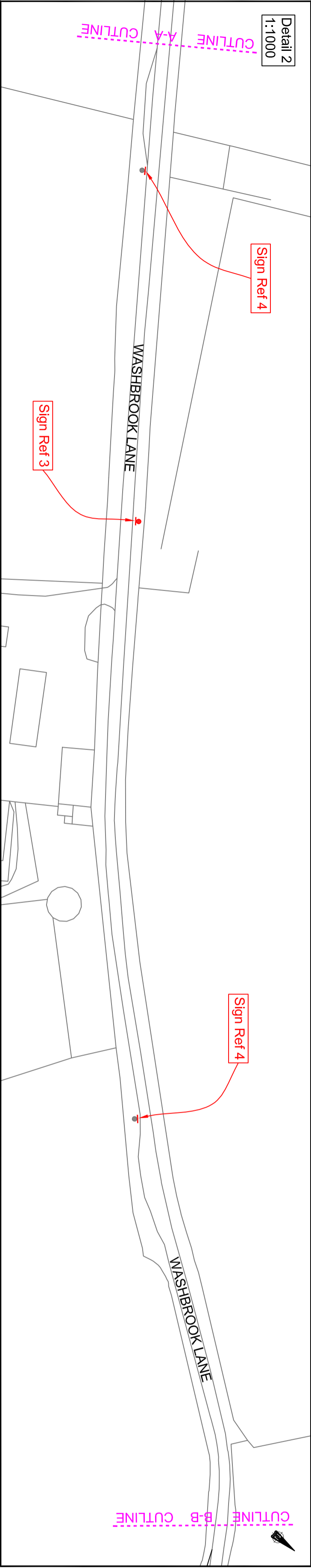


- KEY**
- New signs, see references
  - Existing signing to remain
  - Existing vegetation to be cut back and cleared



**Note:**  
Location of signing to be marked on site by engineer.

This map is reproduced from Ordnance Survey material with the permission of Ordnance Survey on behalf of the Controller of Her Majesty's Stationery Office @ Crown copyright. Unauthorised reproduction infringes Crown copyright and may lead to prosecution or civil proceedings.

Northamptonshire County Council: Licence No. 100019331. Published 2012.

REV	DATE	BY	DESCRIPTION	CHK	APP
DRAWING STATUS					
TENDER					

**MGWSP**

Northamptonshire County Council

Delivering transport and highways services together

PROJECT:

**Parking Strategy and Schemes**  
**Sywell Country Park**

TITLE:

**Location Plan**

SCALE @ A2:

As Shown

CHECKER:

MB

DESIGNER/AMK:

RCW

APPROVED:

SLH

DATE:

16.7.2012

PROJECT No.:

NH12BI06

DRAWING No.:

S802/12/003

REV:

-